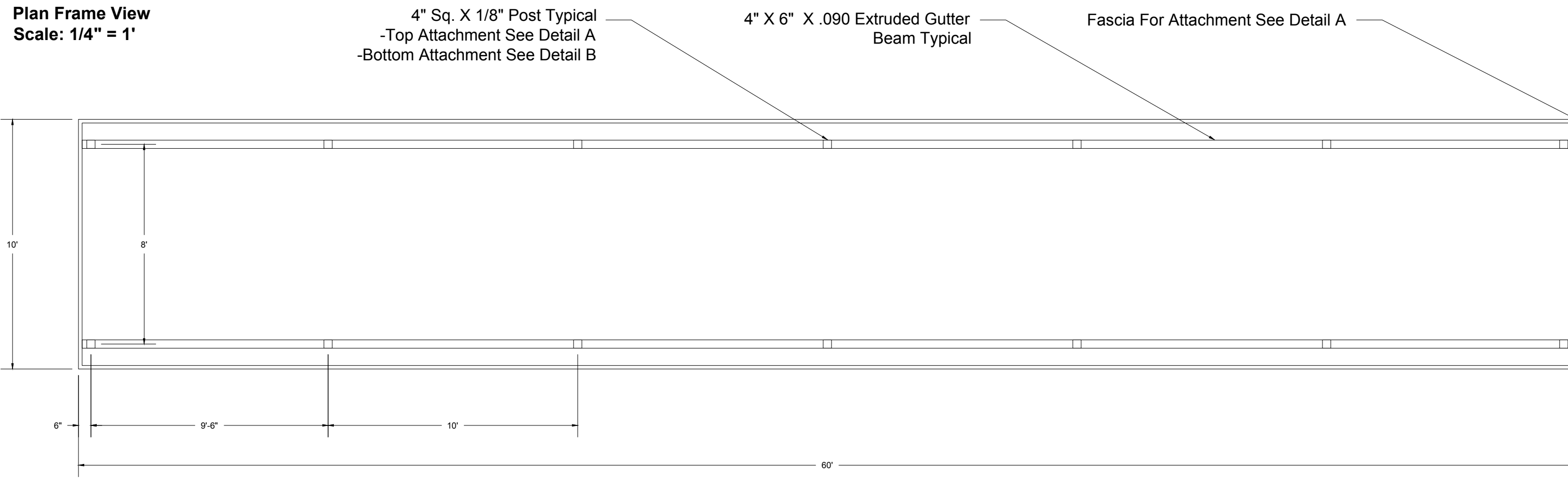


Plan Frame View
Scale: 1/4" = 1'



Design Information

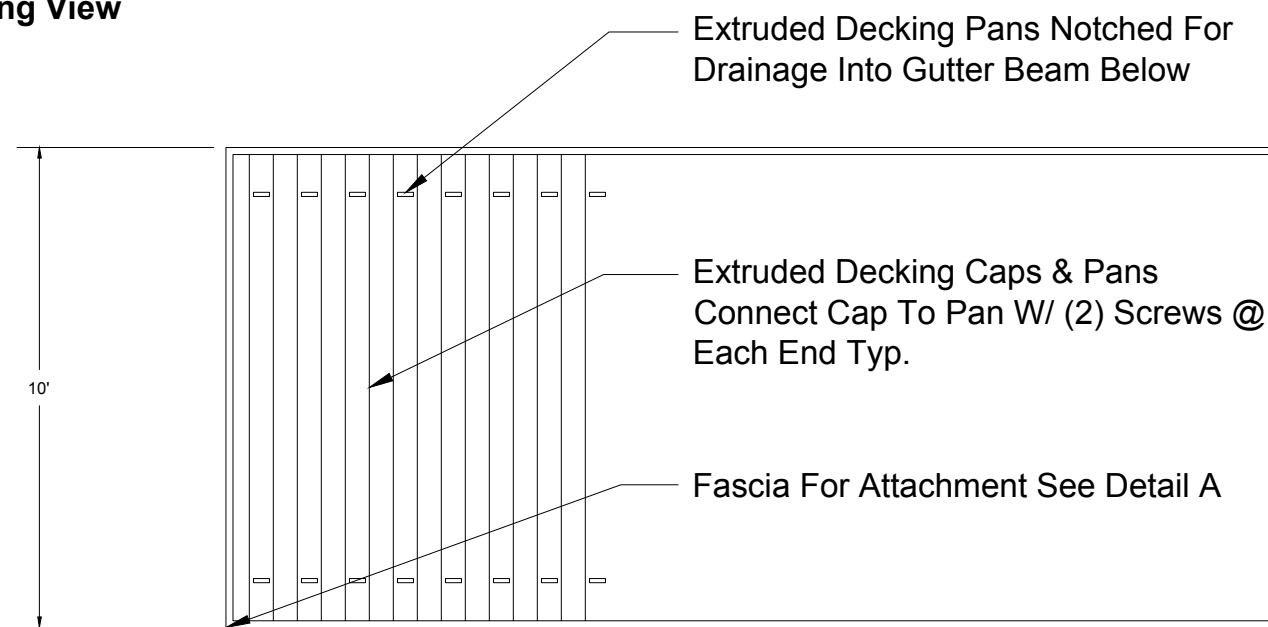
2010 FLORIDA BUILDING CODE, ASCE 7-05
V=130 MPH, EXPOSURE 'C', MRH 'B'
DESIGNED AS ROOF OVER OPEN
STRUCTURE, OBSTRUCTED WINDFLOW
I=1.0, Kz=0.95, G=0.85

- THIS SYSTEM HAS BEEN DESIGNED AND SHALL BE FABRICATED IN ACCORDANCE WITH THE REQUIREMENTS OF THE 2007 FLORIDA BUILDING CODE WITH 2009 SUPPLEMENTS.
- THE EXISTING HOST STRUCTURE MUST BE CAPABLE OF SUPPORTING THE LOADED CANOPY SYSTEM AS VERIFIED BY THE ARCHITECT/ENGINEER OF RECORD. NO WARRANTY, EITHER EXPRESSED OR IMPLIED, IS CONTAINED HEREIN.
- ALL FASTENERS TO BE # 10 X 3/4" OR GREATER 2024-T4, 18-8 SERIES 300 NON-MAGNETIC STAINLESS STEEL, OR CADMIUM PLATED OR OTHERWISE CORROSION RESISTANT MATERIAL AND SHALL COMPLY WITH 5.1.1C, SPECIFICATIONS FOR ALUM. STRUCTURES -SECTION 1, THE ALUMINUM ASSOCIATION, INC., & APPLICABLE FEDERAL, STATE, AND LOCAL CODES.
- ALL EXTRUDED MEMBERS SHALL BE ALUMINUM ALLOY TYPE 6063-T6, 6061-T6, OR 6005-T5.
- ALL WOOD MEMBERS SHALL BE #2 SYP OR BETTER W/ SPECIFIC GRAVITY G=0.55 OR GREATER.
- ALL WELDING SHALL BE DONE BY AN AWS CERTIFIED WELDER OR SHALL CONFORM TO AISC STEEL CONSTRUCTION MANUAL 13TH ED AS INSPECTED AND VERIFIED BY OTHERS. MIN. WELD 1/2" FILLET WELD.
- THE CONTRACTOR IS RESPONSIBLE TO INSULATE ALUMINUM MEMBERS FROM DISSIMILAR METALS TO PREVENT ELECTROLYSIS.
- ELECTRICAL GROUND, WHEN REQUIRED, TO BE DESIGNED & INSTALLED BY OTHERS.
- ENGINEER SEAL AFFIXED HERETO VALIDATES STRUCTURAL DESIGN AS SHOWN ONLY. USE OF THIS SPECIFICATION BY CONTRACTOR, et. al. INDEMNIFIES & SAVES HARMLESS THIS ENGINEER FOR ALL COST & DAMAGES INCLUDING LEGAL FEES & APPELLATE FEES RESULTING FROM MATERIAL FABRICATION, SYSTEM ERECTION, CONSTRUCTION PRACTICES BEYOND THAT WHICH IS CALLED FOR BY LOCAL, STATE, & FEDERAL CODES & FROM DEVIATIONS OF THIS PLAN.
- ENGINEER ON RECORD HAS NOT VISITED THIS JOBSITE. INFORMATION CONTAINED HEREIN IS BASED ON CONTRACTOR-SUPPLIED DATA AND MEASUREMENTS. ENGINEER ON RECORD SHALL NOT BE HELD RESPONSIBLE OR LIABLE IN ANY WAY FOR ERRONEOUS OR INACCURATE DATA OR MEASUREMENTS. DIMENSIONS ARE SHOWN TO ILLUSTRATE DESIGN FORCES AND OTHER DESIGN CRITERIA. THEY MAY VARY SLIGHTLY, BUT MUST REMAIN WITHIN THE LIMITATIONS SPECIFIED HEREIN. WORK SHALL BE FIELD VERIFIED BY OTHERS PRIOR TO CONSTRUCTION. ENGINEER ON RECORD SHALL BE NOTIFIED AND GIVEN AN OPPORTUNITY TO REEVALUATE OUR WORK UPON DISCOVERY OF ANY INACCURATE INFORMATION PRIOR TO MODIFICATION OF EXISTING FIELD CONDITIONS AND FABRICATION AND INSTALLATION OF MATERIALS.
- EXCEPT AS EXPRESSLY PROVIDED HEREIN, NO ADDITIONAL CERTIFICATIONS OR AFFIRMATIONS ARE INTENDED.

General Information

- Clear Anodized Finish
- All Aluminum Construction
- Foam Block Outs for Posts Provided by Awning Works, Inc.

Partial Top Decking View
Scale: 1/4" = 1'

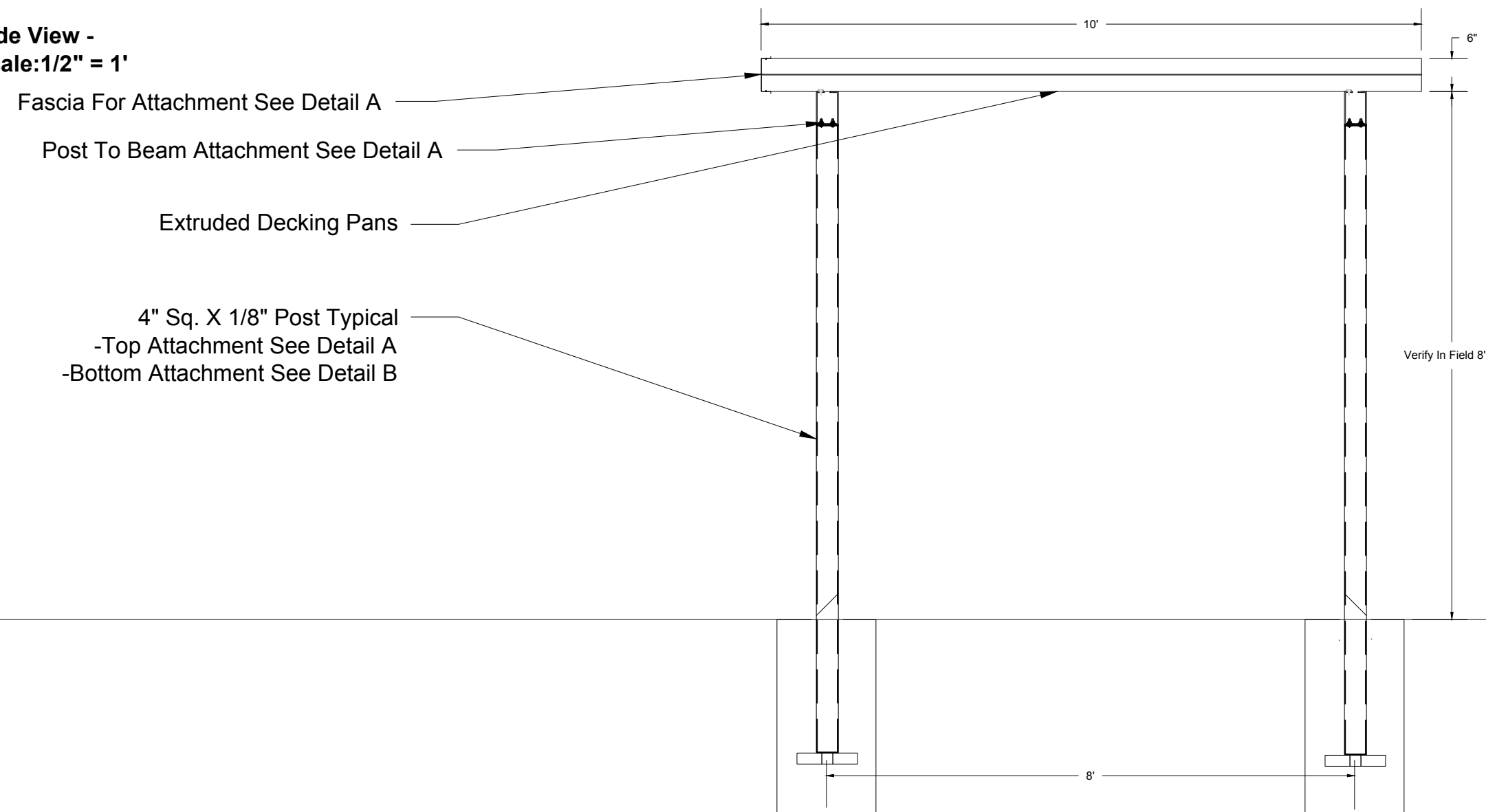


Decking Pans: To Be WWC-17 6063-T6 Aluminum; W/ #10X3/4 Tek Screws W/ Neoprene Washers @ 6" O.C. Max. Top Cap To Be WWC-19 6063-T6 Aluminum

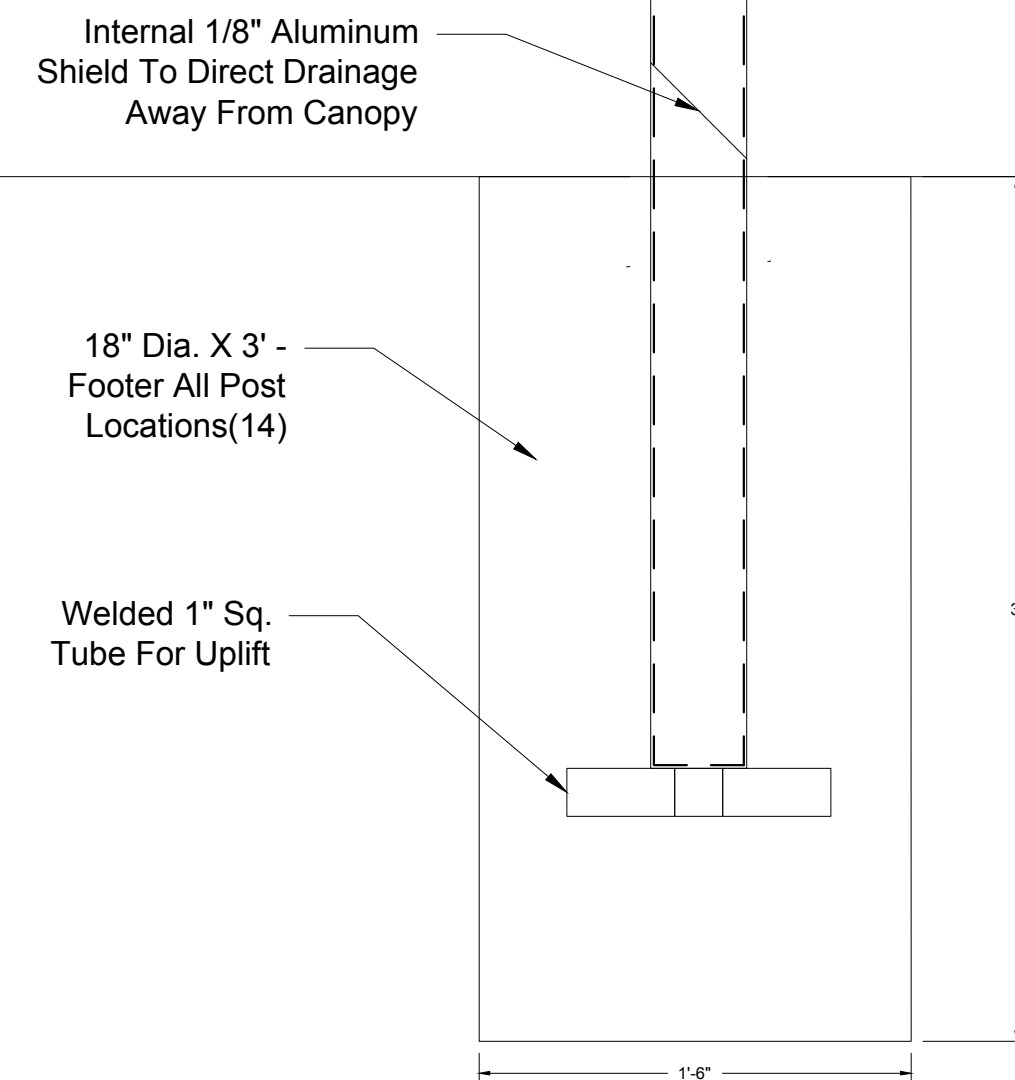
Detail "A"
Scale: 1-1/2" = 1'



Side View -
Scale: 1/2" = 1'



Detail "B"
Scale: 1-1/2" = 1'



Client Name & Project

Typical
WalkWay Decking Canopy

Manufacturer

AWNING WORKS Inc.
14115 63Rd Way N. - Clearwater, FL 33760
Tel: 727.524.1118 - Fax: 727.524.3110
awnings@awningworksinc.com
www.awningworksinc.com
Certified General Contractor
License # CGC1511475

Structural Engineer

Copyright Notes

COPYRIGHT AWNING WORKS INC.
This document is the property of Awning Works Inc. and shall not be reproduced in whole or part without written consent of Awning Works Inc. alterations, highlights, remarks or other markings to this document are not permitted.