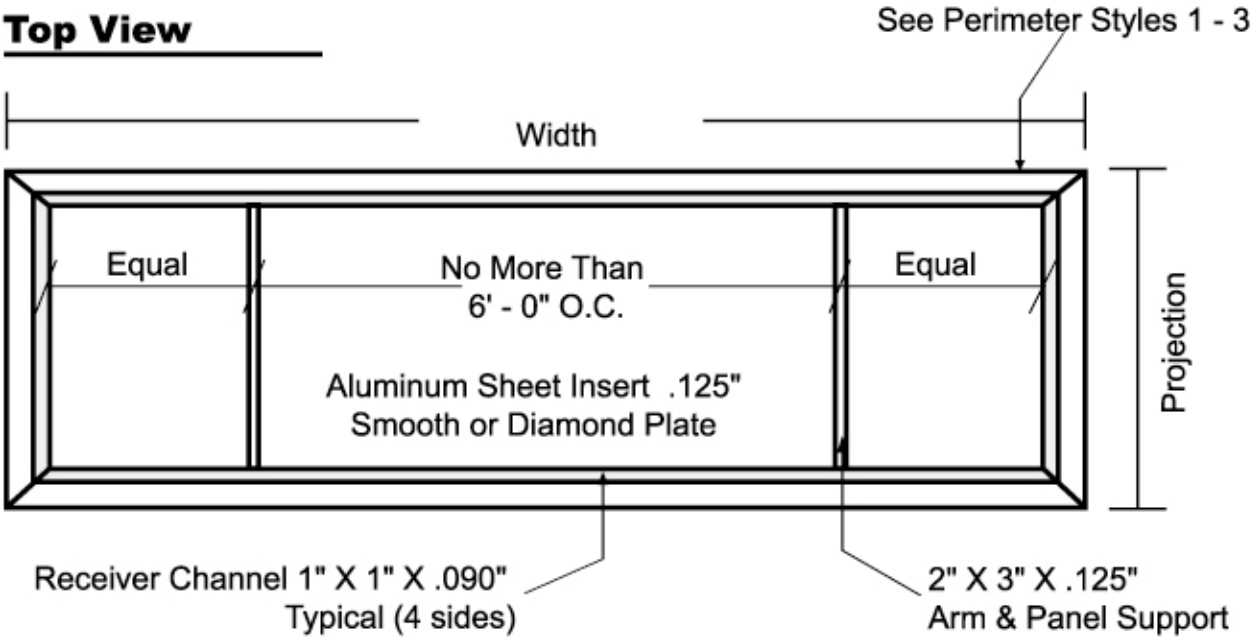


Clearwater Classic: Global

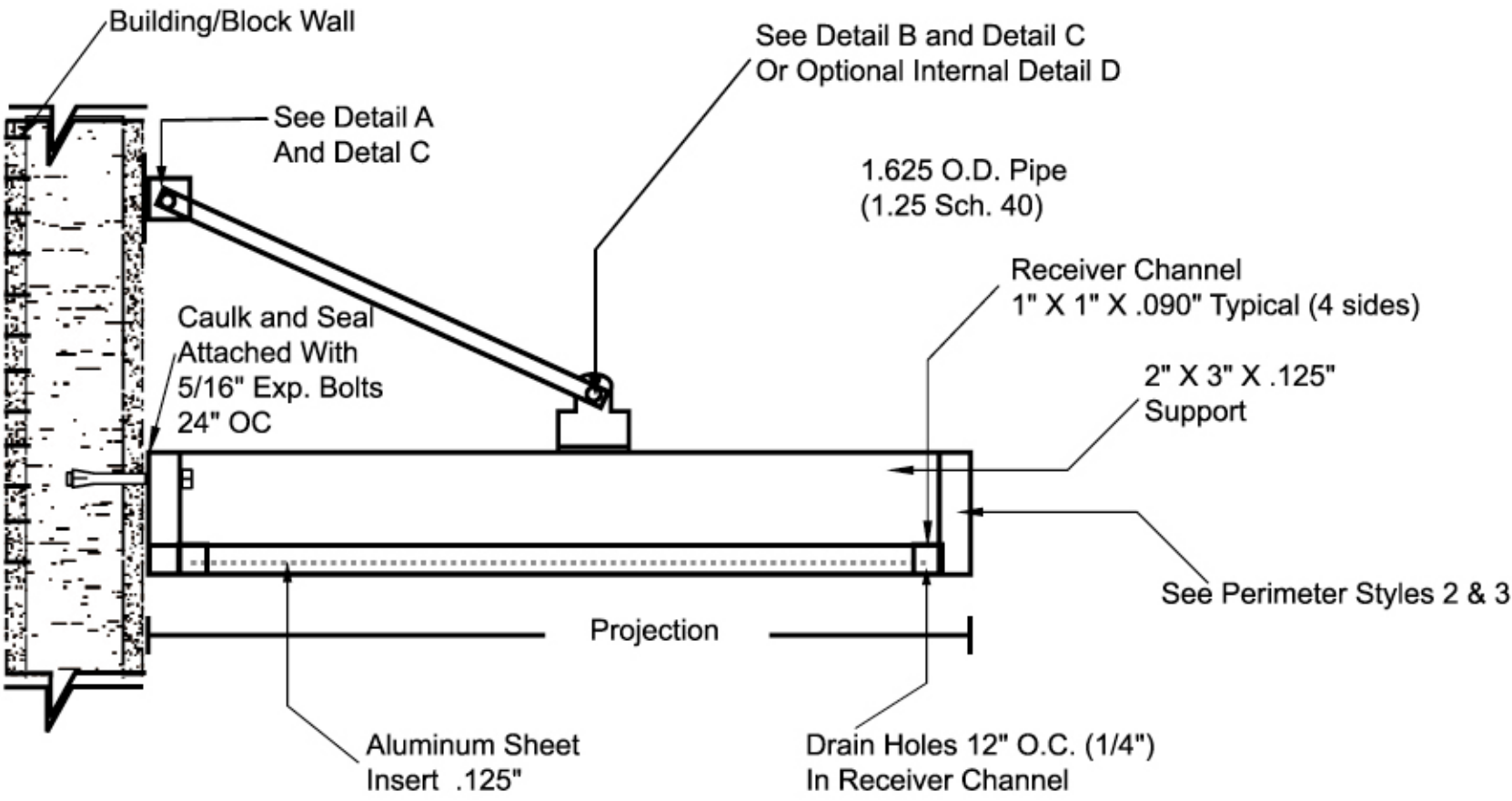
Arched Sheet Canopy

Top View

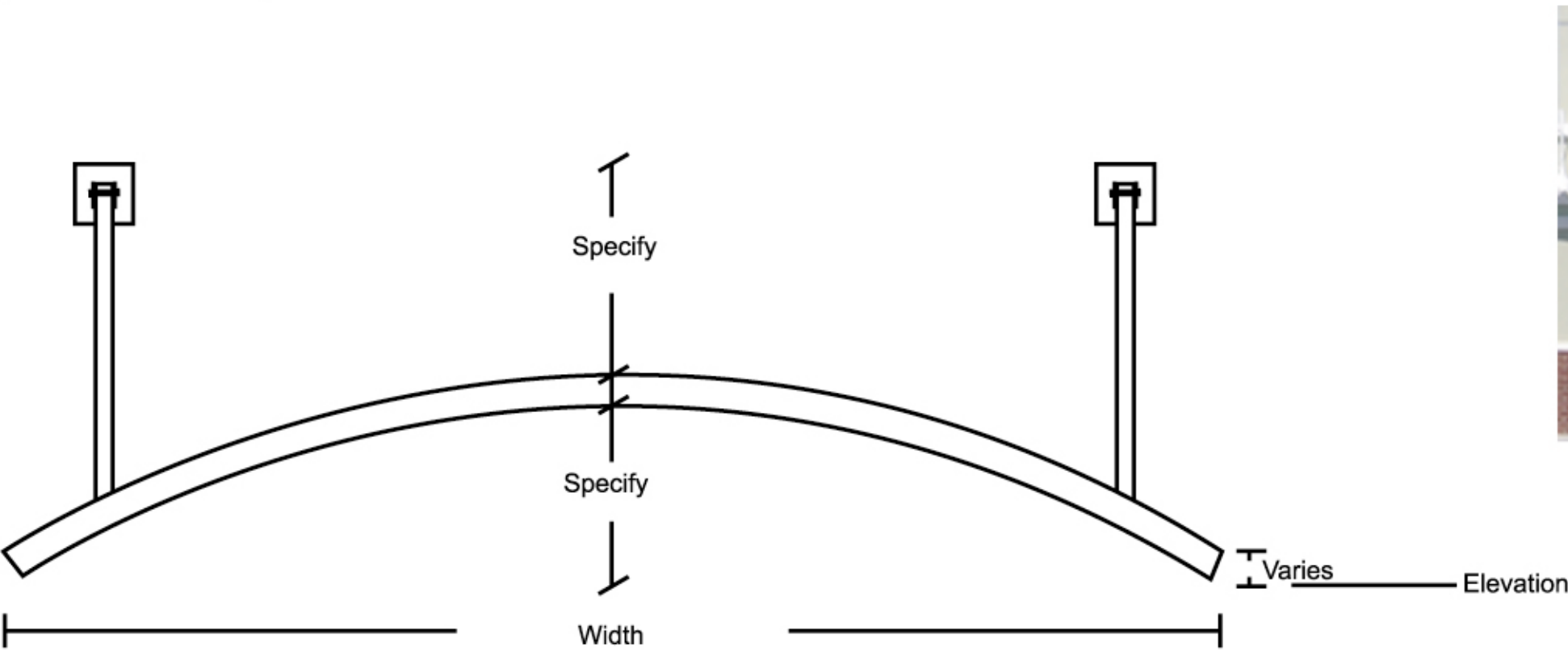


Side View

Typical Installation

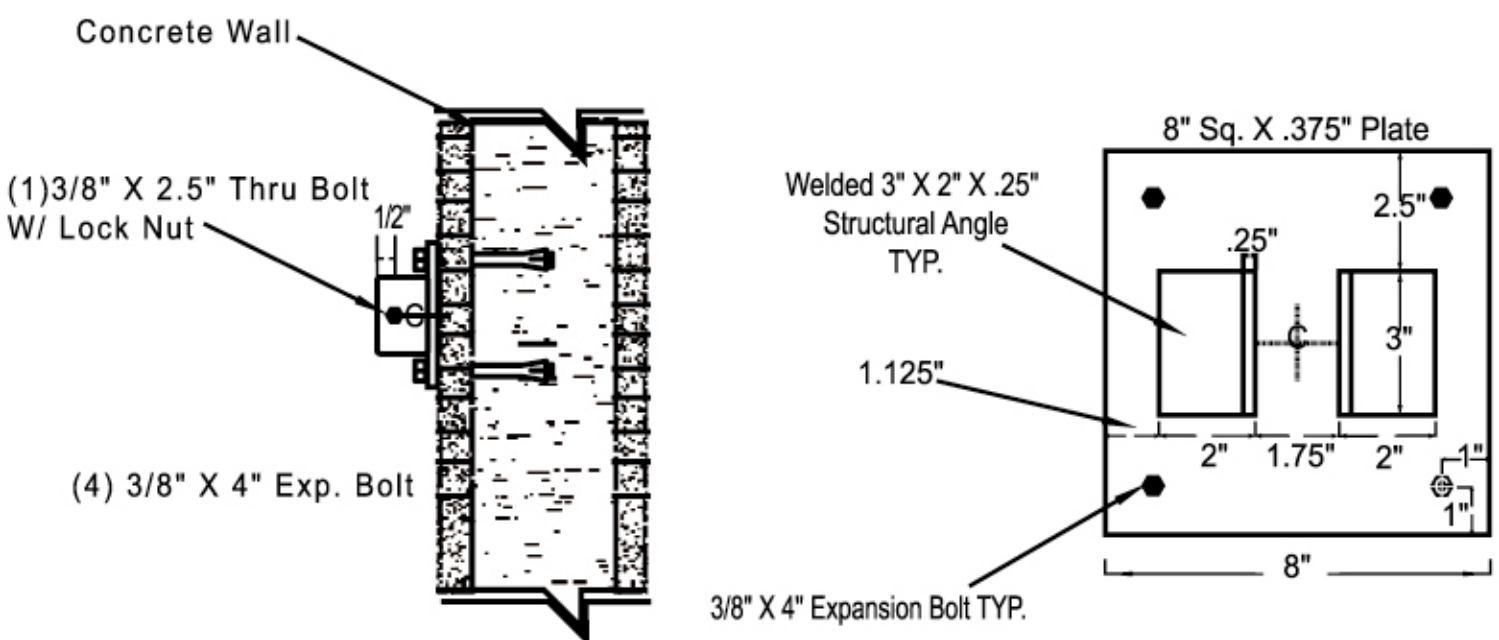


Front View



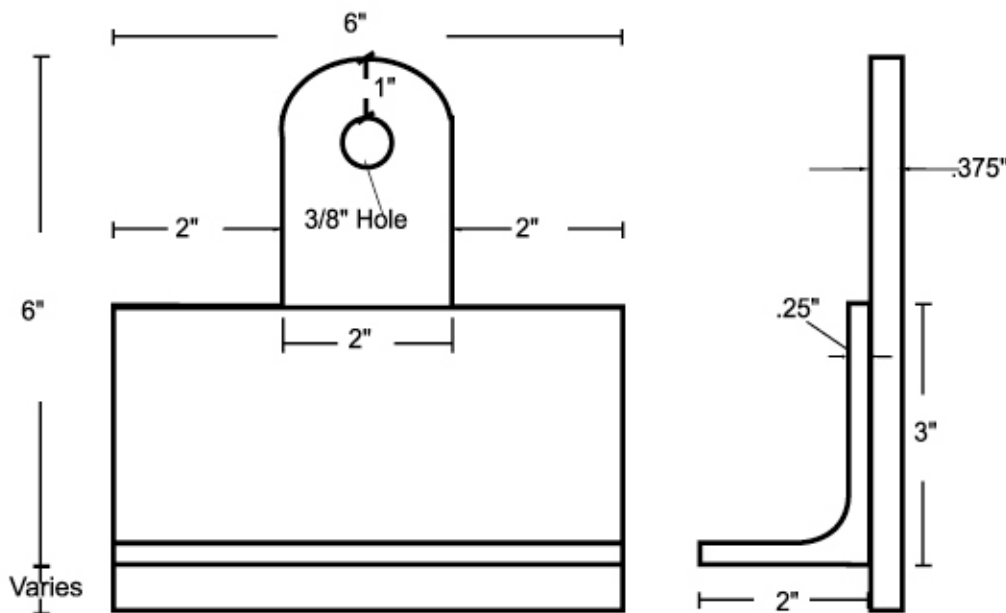
Detail A:

Wall Plate Typical Installation



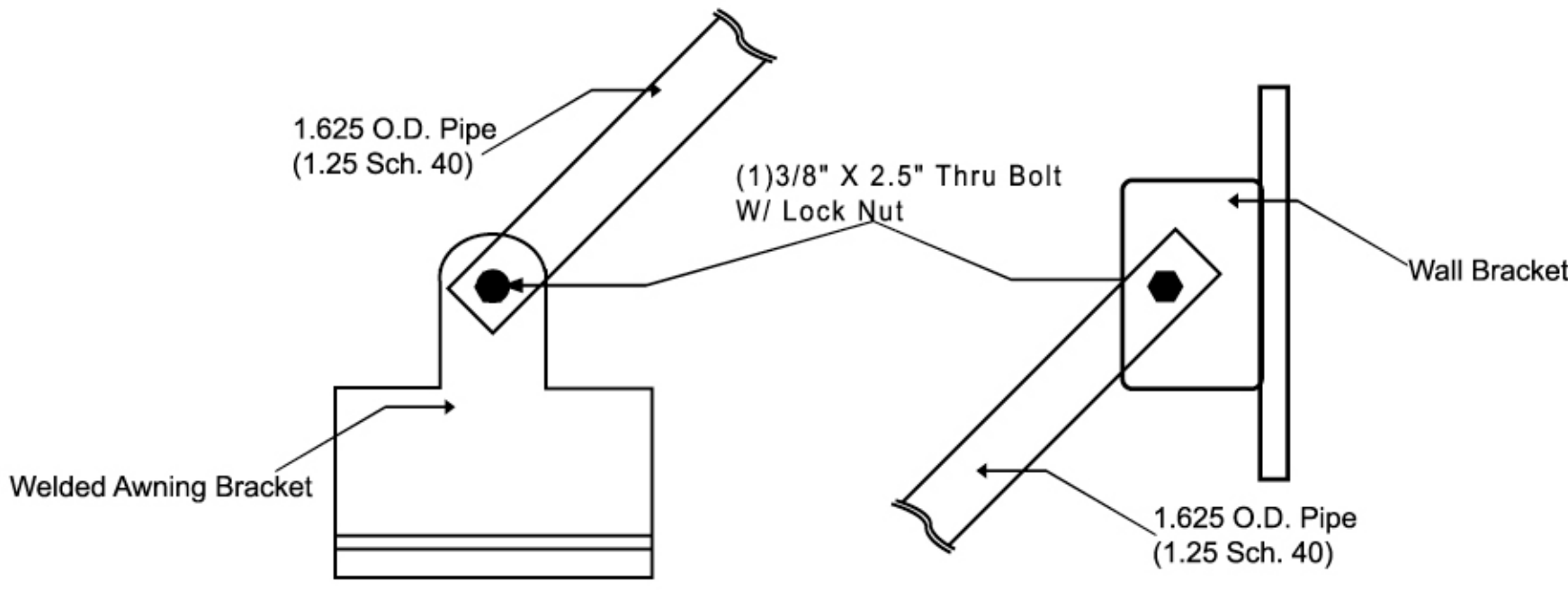
Detail B:

Welded External Awning Bracket 2" X 3" X .25" Structural Angle
Welded 3/8" Plate Mounting Bracket



Detail C:

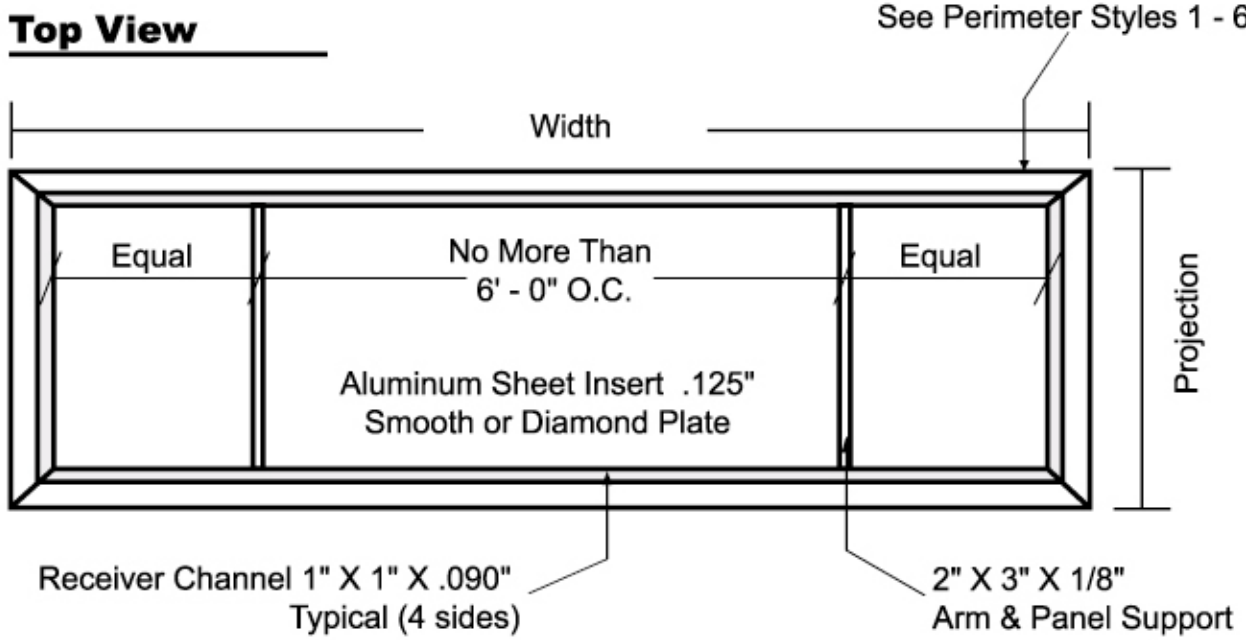
Arm Connections Typical Installation



Clearwater Classic: Sheet Horizon

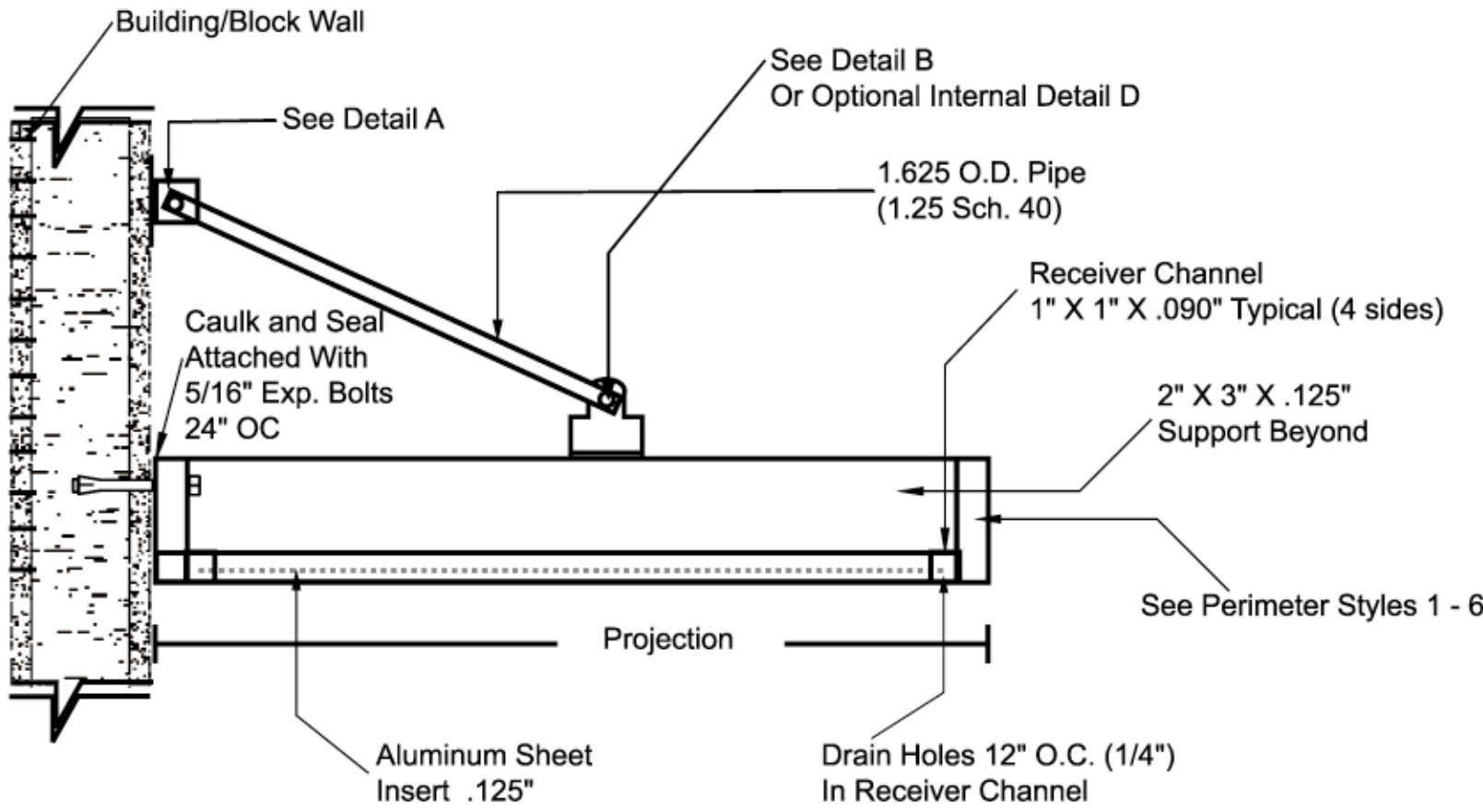
Flat Profile

Top View

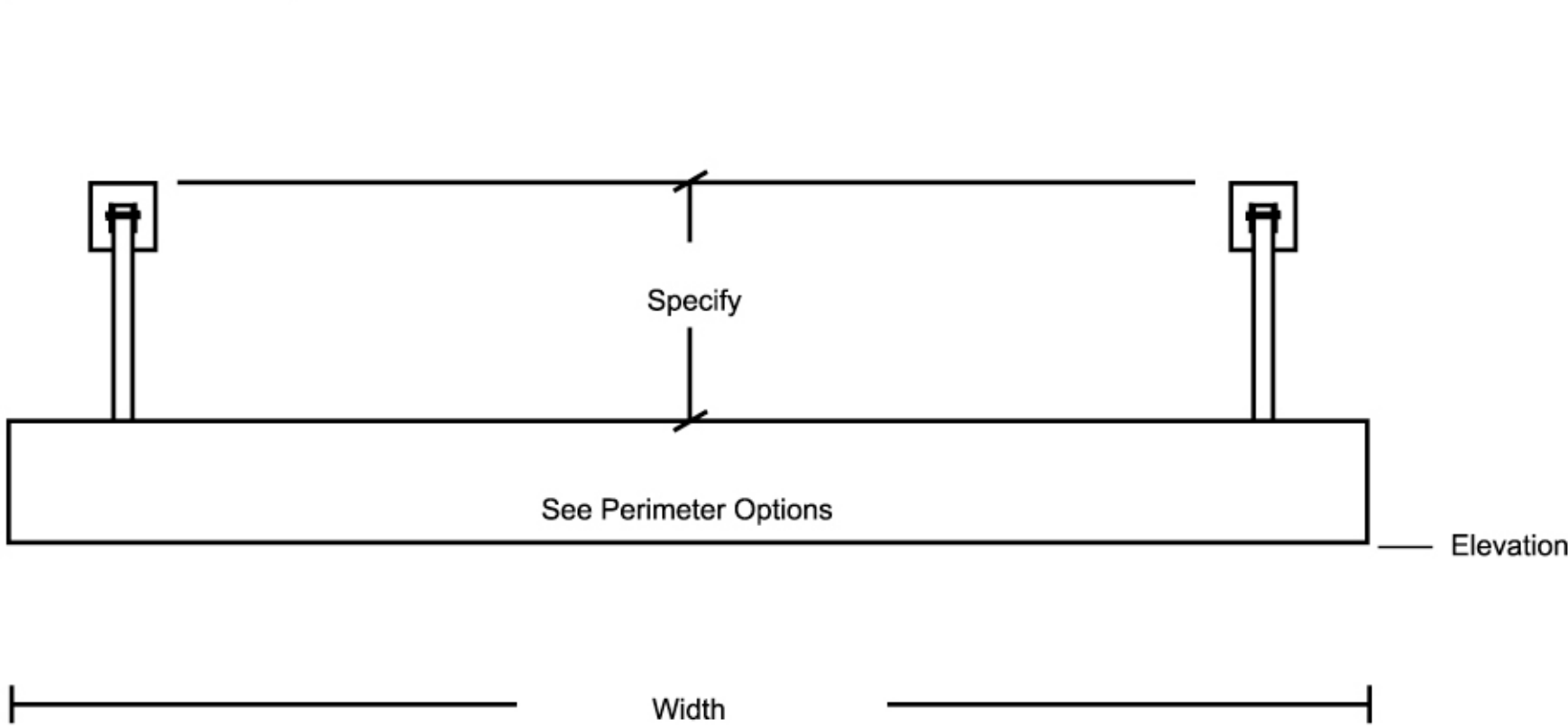


Side View

Typical Installation

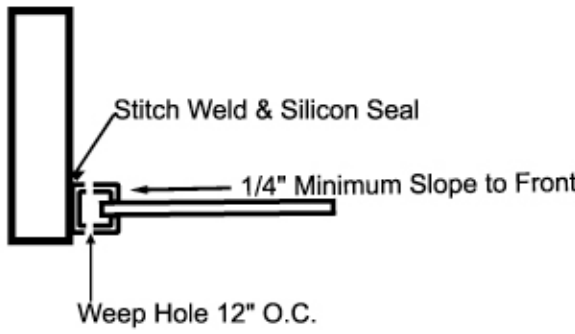


Front View

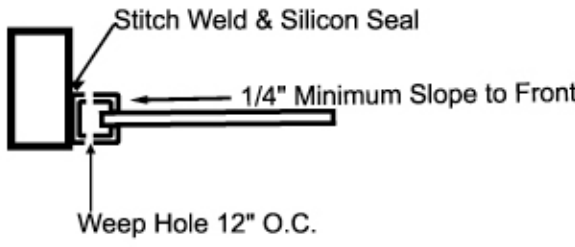


Perimeter Styles

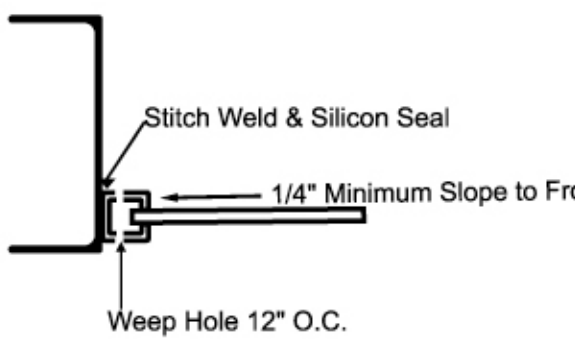
Style 1
2" X 8" X .125" Rect. Tube



Style 2
2" X 4" X .125" Rect. Tube



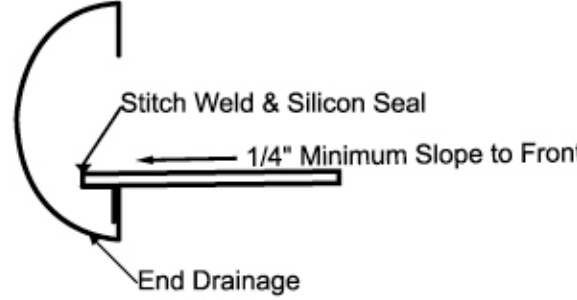
Style 3
3" X 8" X .350" Channel - Face Direction Optional



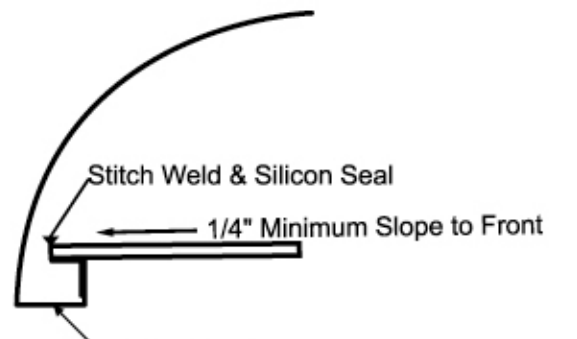
8" X .125" Radius Channel



8" X 1/8" or 10" X .140" Half Round



12" X .140" Quarter Round



Awning Works Inc
"Clearwater Classics"
Metal Canopy Specifications

Part 1 General

1.1 Description of Work

- A. Work in this section includes fabrication and installation of extruded aluminum framed overhead canopies as manufactured by Awning Works, Inc.
- B. Design Considerations
1. Finishing of various configurations as required by the attachment design approach.
 2. Determine wall construction and blocking requirements
 3. Site Specific Engineering per local codes
 4. Direction of water drainage and method
 5. Field verification of elevations, dimensions, existing structures, obstructions or materials.

1.2 Quality Assurance

- A. Products meeting these specifications as established by quality standards, design & manufacturing techniques developed by Awning Works Inc, Florida, Phone 1.866.873.2941, website: www.awningworksinc.com
- B. If requested, supply manufacturer's standard literature and specifications for canopies.
- C. When specified by contract, submit engineered shop drawings showing structural component locations/positions, material dimensions and details of construction and assembly.

1.3 Field Measurement

- A. Confirm site dimensions prior to manufacturing

1.4 Performance Requirements

- A. Canopy must conform to local building codes.
- B. Determine if specific load requirements have been established for canopies and if stamped calculations are required for location in which canopy is installed.

1.5 Deliver, Storage, Handling

- A. Deliver and store all canopy components in protected areas defined by the customer or general contractor. Handle canopy products in a manner that minimizes field touch-up.

Part 2 Products

2.1 Manufacturer

- A. Awning Works Inc., www.awningworksinc.com
14115 63rd Way N
Clearwater Florida 33760
Phone: 1.866.873.2941
Fax: 727-524-3110
Email: awnings@awningworksinc.com

2.2 Materials

- A. Perimeter framing (fascia), bracing and diagonal support arms shall be minimum extruded aluminum, alloy 6063-T5, in profile and thickness as determined by the engineering requirements.
- B. Inset paneling, sheet or louvers shall be the style, material and thicknesses as specified on the drawing
- C. All attachment hardware shall be rust resistant or stainless steel as specified on the shop drawing

2.3 Finishes

- A. Standard options are mill, anodized, Pac-Clad, Kynar 500, marine grade powder coat, automotive grade acrylic enamel. Steel panels are available in 20 year Kynar and Galvalume finishes. Roll formed panels are available as stock baked enamel finish in white, bronze or ivory.
- B. All framework connections shall be MIG or TIG welded. Mechanical connections shall be used for panel integration and support members. Locknuts shall be used exclusively.
- C. Erection shall be performed by an approved installer and scheduled after all painting, concrete, masonry and roofing in the area is completed.

2.4 Fabrication

- A. Installation shall be in strict accordance with manufacturer's shop drawings. Particular attention should be given to protecting the finish during handling and erection. Field touch up paint will be applied to any marred areas.
- B. Installation shall be in strict accordance with manufacturer's shop drawings. Particular attention should be given to protecting the finish during handling and erection. Field touch up paint will be applied to any marred areas.
- C. After installation, the work site and canopy will be left in a clean condition.

Awning Works
Incorporated

14115 63rd Way N.
Clearwater, FL 33760
Tel: 727.524.1118
Fax: 727.524.3110
awnings@awningworksinc.com
www.awningworksinc.com

Project

Clearwater Classics
Metal Canopies
Page 2 of 2

Project Info

Job Number:

Document Date: 10/21/05

Drawn By: JS

File Name:
Clearwater_Classic-Sheet.pdf

© Copyright Awning Works Inc.

Modification Log

General Notes

- Aluminum Awning, Welded Panels
- Aluminum Sheet Panel Insert .125"
- 6063-T5 Extruded Aluminum Frame & Brackets
- 1.625 O.D. Pipe Arm Supports
- Design Per F.B.C., 2004 with:
Wind = 130 MPH w/ 3 sec. gust Exp. B
Comp. & Cladding Pressure = +/- 43 PSF