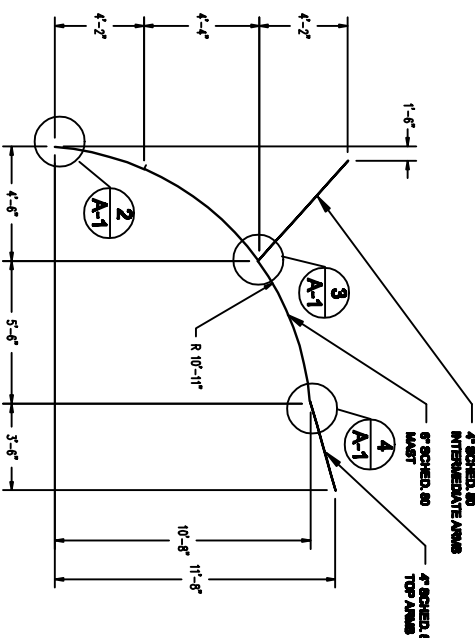
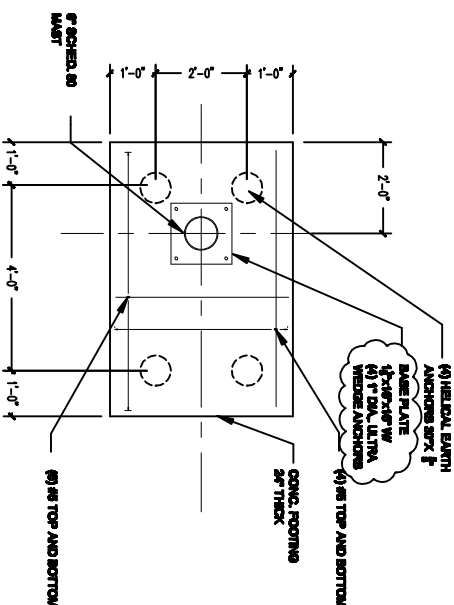


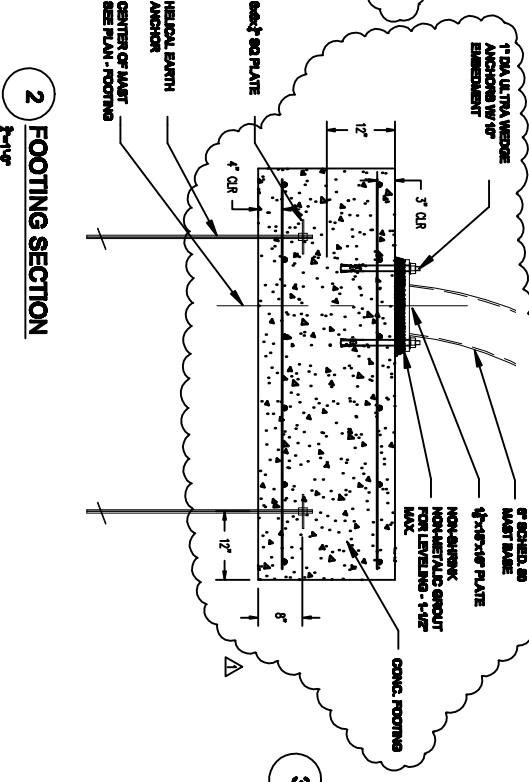
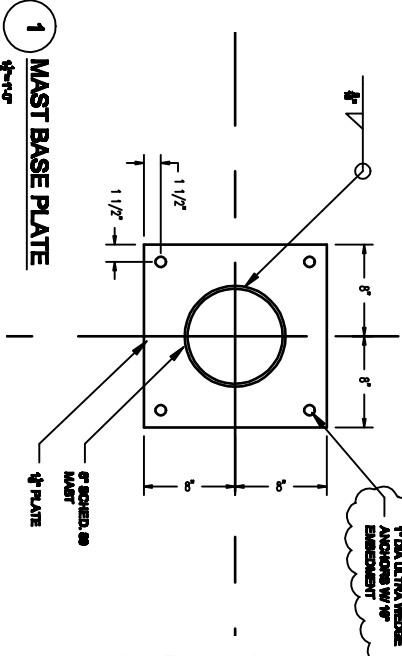
C FRONT ELEVATION - FRAME WITH FABRIC SAIL

A PLAN - FRAME AND FOOTING



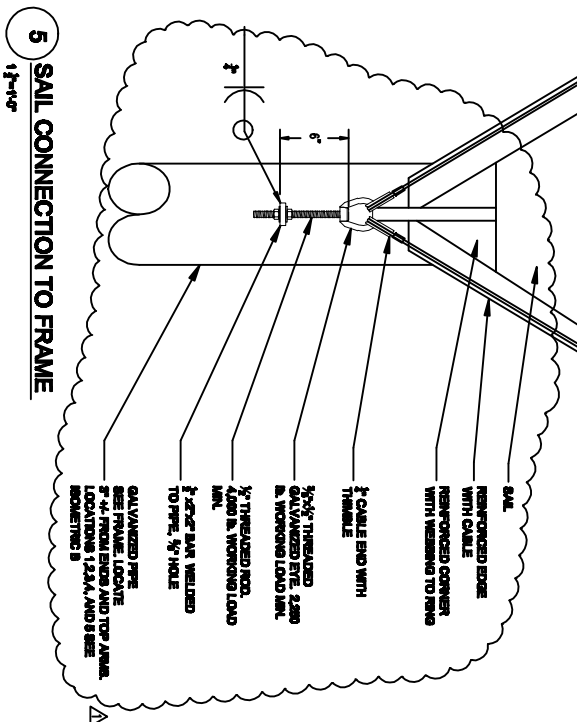
D PLAN - FOOTING

E DIMENSION ELEVATION

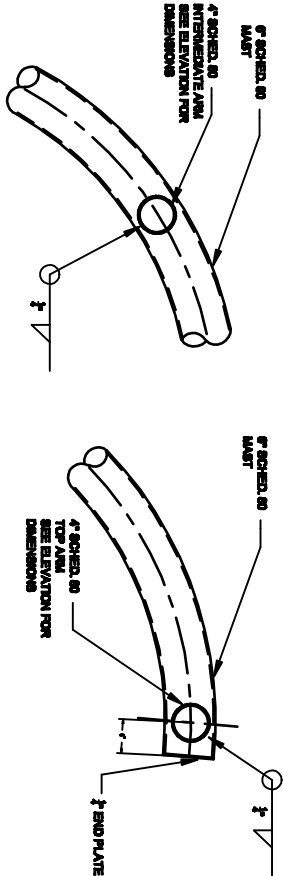


1 MAST BASE PLATE

2 FOOTING SECTION

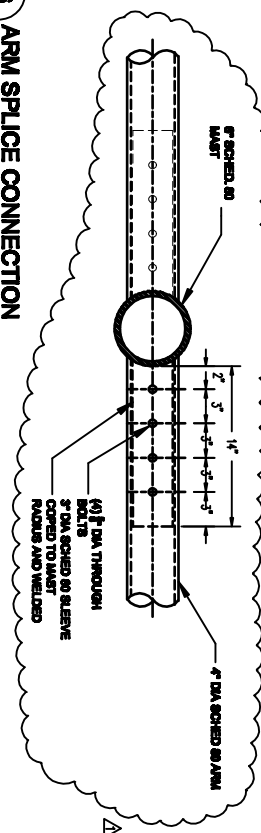


5 SAIL CONNECTION TO FRAME



3 INTERMEDIATE ARM CONNECTION

4 TOP ARM CONNECTION



6 ARM SPICE CONNECTION

General Notes

1. DESIGN IS AS PER FIG 2007 W 2007.
2. ALL DIMENSIONS ARE IN FEET AND INCHES.
3. CONCRETE SHALL BE 3,000 PSI (20 MPa).
4. WELDS PER AWS D1.1/ANSI A5.1.
5. ALL DIMENSIONS ARE IN FEET AND INCHES.
6. ALL DIMENSIONS ARE IN FEET AND INCHES.
7. ALL DIMENSIONS ARE IN FEET AND INCHES.
8. ALL DIMENSIONS ARE IN FEET AND INCHES.
9. ALL DIMENSIONS ARE IN FEET AND INCHES.
10. ALL DIMENSIONS ARE IN FEET AND INCHES.
11. ALL DIMENSIONS ARE IN FEET AND INCHES.
12. ALL DIMENSIONS ARE IN FEET AND INCHES.
13. ALL DIMENSIONS ARE IN FEET AND INCHES.
14. ALL DIMENSIONS ARE IN FEET AND INCHES.
15. ALL DIMENSIONS ARE IN FEET AND INCHES.

Gary D. Ferguson, P.E., S.E., AIA, P.A.

**12001 Midway Road, Suite 3000
Dallas, Texas 75244
(214) 343-1000
gfergus@ferguson.com**

PLANS 5/16/12 E.A. 1/1/12 CMA 2/1/12

**Ayring Works - Shade
Brandon Sculpture Garden**

**Brilliant Community College
Tempe, AZ 85281**

A1

Sheet	2011-1177
Designed By	XX
Drawn By	XX
Check By	XX
Date	DEC 6, 2011
See	SEE PLAN